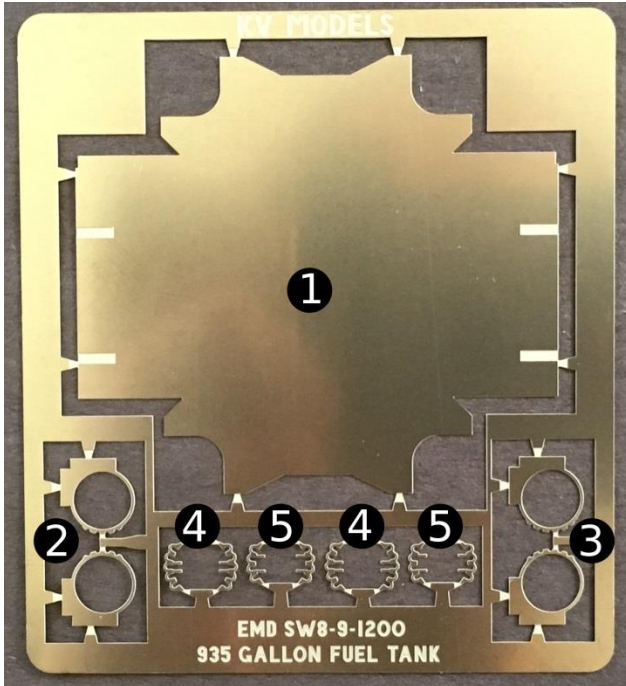
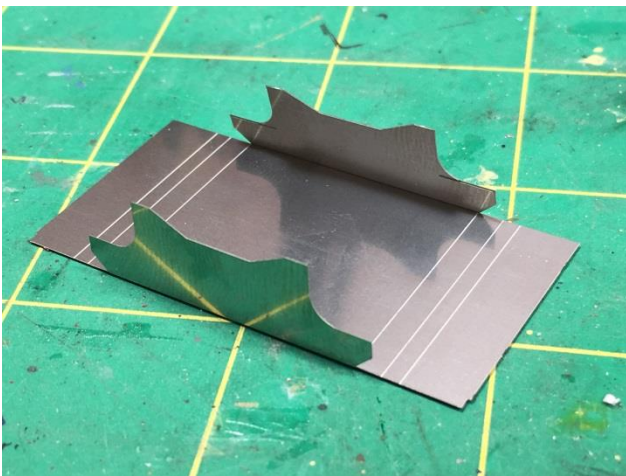


## KV-107H EMD 935 GALLON FUEL TANK KIT



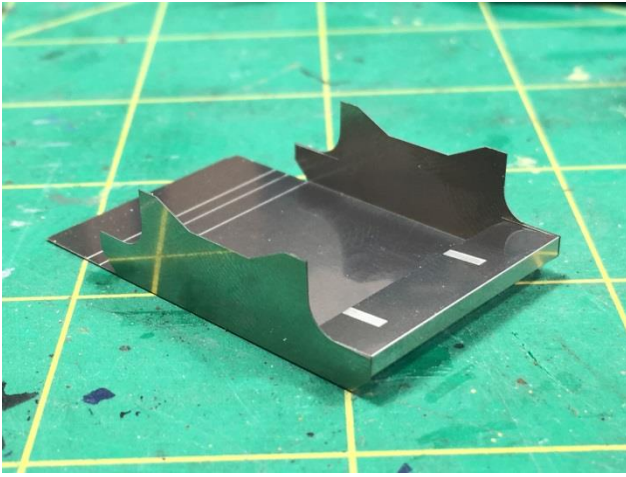
1. Fuel Tank Extension
2. Main Reservoir Mounting Brackets (Engineer Side)
3. Main Reservoir Mounting Brackets (Fireman Side)
4. Pipe Bracket Top Half (Fireman Side)
5. Pipe Bracket Top Half (Engineer Side)



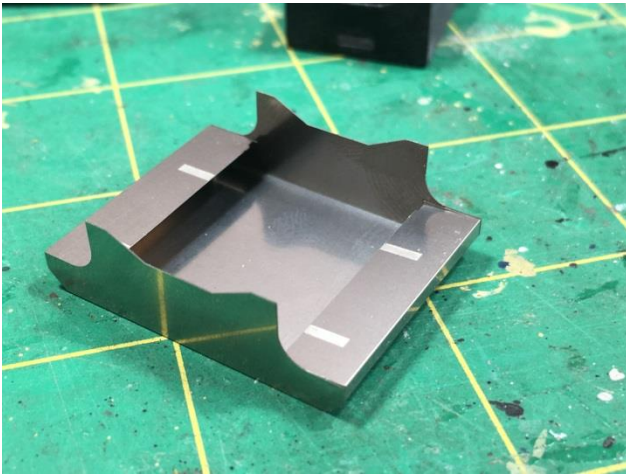
Step 1. Fold the fuel tank extension ends up. Note that the fold lines will be INSIDE the tank extension.



Step 2. Fold the fuel tank extension sides up starting at the fold line closes to the center of the tank. Those folds should match the ends of the fuel tank extension. A metal edge such as this scale will help greatly when bending the at the folds. The metal edge will allow you to bend only that particular bend line when used in this manner.



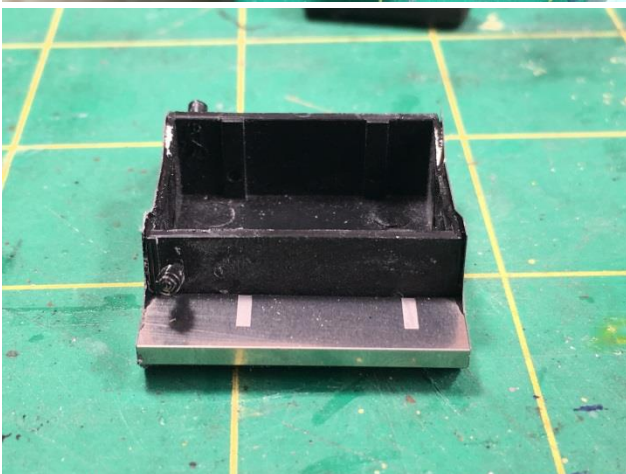
Step 3. Fold the other side of the fuel tank extension in the same manner as the first side.



Step 4. With both sides of the fuel tank extension folded, use a little CA under the top side of the sides to secure the folds. The CA will wick inward when placed under the top of the sides.



Step 5. Prepare the fuel tank core for installation. I removed all raised detail from the underside. There is a raised line down the center as well as some lettering which should be sanded smooth.



Step 6. Insert the fuel tank core into the fuel tank extension. Note that the fuel tank fillers on the core go to the rear of the extension. The etched rectangles on the top of the fuel tank extension should be toward the front of the tank away from the fillers like shown.



Step 7. Prepare the main reservoir tanks for installation of the Main Reservoir Mounting Brackets. The brackets are slid over each end of the reservoir tanks up to the straps molded into the tank. In order to do this some material needs to be removed from the reservoir tank mounting pad on the back of the tank. The photo shows two cuts made into the pad with a razor saw lining up with the outer edge of the molded straps.



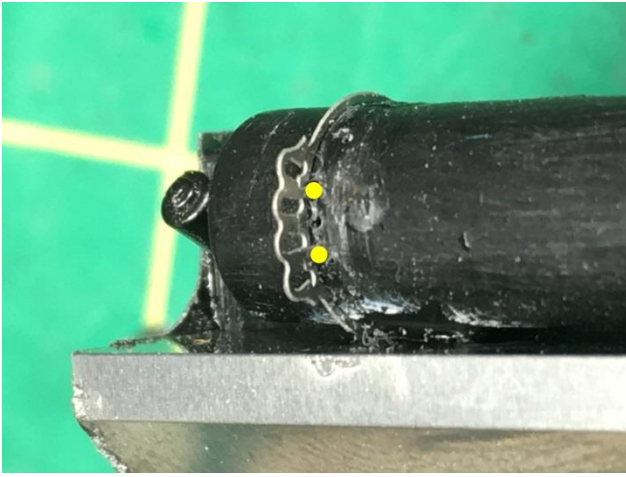
Step 8. Remove the excess mounting pad material with a file, knife or sanding stick. When that is done fold the mounting plates of the mounting brackets and slide the brackets over the tank ends. Secure the brackets to the rear of the mounting pad using CA. It is fine if the brackets slide around a bit on the front of the tank as they are not secured with CA at this time. Try to line them up the best you can.



Step 8a. Note the location of the pipe brackets. They should be in the front of the tank opposite the mounting pad. If your pipe brackets are anywhere but this location try again.



Step 9. Mount the main reservoir tanks to the fuel tank. CA on the back pads of the mounting bracket should do fine. This is important. Make sure that you install the correct tank on the correct side. One tank has 5 rows of pipes while the other has 4 rows. The Engineer side should have 4 rows while the Fireman Side should have 5 rows.



Step 10. In order to install the Pipe Bracket Top Half sections two mounting holes have to be drilled. I drill them on the inside edge of the bracket, into the molded strap. A #80 bit is the smallest hole you can drill and still have the mounting tabs work. Drill the holes in the location of the yellow dots in the photo. Do this for both brackets. Note that this is the 4 pipe side or the Engineer Side.



Step 11. Do the same for the Fireman Side or the 5 pipe side. Note that the drilling location for the holes is different on this side. The holes will be closer together. The bracket in the foreground has the pipe bracket top half installed so you can see how they will work when pressed into the mounting holes.



Step 12. Bend and install the piping. I used .015" brass rod for this as it bends easily and is durable. The bent piping assembly will be flat until it is mounted into the divots on the pipe brackets. The pipe bracket top halves will pull the piping inward toward the tank matching the curvature of the tank. A little CA along the mating surfaces of the bracket halves as well as on the mounting pins should hold everything together.



Step 13. Do the same for the 4 pipe side.